



# Mill Hill

Instilling values, inspiring minds

Grimsdell | Belmont | Mill Hill School | Mill Hill International

## Grimsdell

Mill Hill Nursery and Pre-Prep School | For pupils aged 3 to 7





**Key facts about Grimsdell**  
Co-educational  
Pre-Preparatory School

**3–7**

ages

### **Wrap around care**

Breakfast Club 7:30–8:15am  
Stay and Play after school care  
3:15–5:30pm

**18**

our average class size

**10 miles**

from central London

**150**

acres of grounds and facilities  
belonging to The Foundation

### **No exams**

for admission to Belmont at 7+

### **Part**

of the Mill Hill Education Group,  
which gives pupils a smooth  
transition to Belmont and  
Mill Hill School

‘Awarded Excellent in Quality of  
Education in academic achievement  
and personal development.’

ISI Inspection 2020

# Welcome

## **WE WARMLY WELCOME YOU TO GRIMSDELL**

PRE-PREPARATORY SCHOOL, A HAPPY AND  
CARING SCHOOL WHERE WE UNDERSTAND  
YOUR CHILD IS AN INDIVIDUAL.

At Grimsdell we develop and celebrate  
your child’s character and strengths.  
Childhood is a special time of wonder  
and joy and our curriculum offers your  
child exciting and interactive ways to  
explore, enquire and discover. Your  
child will be immersed in deep,  
meaningful learning experiences that  
will both inspire and motivate them.

We aim to equip children with the  
adaptable tools and skills they will  
need for 21st-century life, and as a  
result Grimsdell children thrive in  
all kinds of situations and tackle  
challenges with a sparkle in their  
eyes. It is a pleasure to know them.

### **The Grimsdell Way**

Above all we value kindness, and  
expect our children to be responsible  
for their actions and have moral  
integrity. We:

- > treat others as we would like  
to be treated ourselves
- > are honest
- > share
- > forgive
- > are kind and helpful
- > are cooperative
- > do our best to be our best
- > share our worries
- > keep everyone safe and healthy

**Kate Simon** BA (Hons), PGCE  
Head, Grimsdell



# Space all around us

## Outstanding Grounds and Facilities

Our four schools at Mill Hill are set in over 150 acres of beautiful grounds, with woods, fields and sports pitches as far as the eye can see. Central London is only 10 miles away, but you would never know it.

Our own grounds at Grimsdell include woods for our Forest Schools, a Science Garden, and separate play areas for the youngest children. Our playgrounds are exciting and imaginative, with adventure equipment, areas to tell stories and do crafts, and a stage. You can tell we love to be outdoors!

Our pupils use Belmont School's grounds and coaches for sport, and Mill Hill School's swimming pool, athletics fields, and theatre. We also share the Foundation Chapel. At Mill Hill we are very much a family, from the youngest to the oldest.

‘Pupils have high self-esteem, show mature levels of discipline and are extremely confident.’

ISI Inspection 2020



# Happy children

CHILDREN LEARN, WORK AND PLAY  
TOGETHER IN A CO-ED ENVIRONMENT.



Your child will quickly develop excellent social skills and learn to be adaptable and emotionally intelligent. They will make friends with each other and know they are equal.

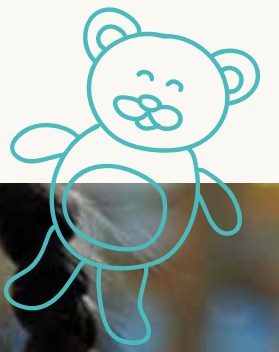
When young children are encouraged to respect each other and always to see people as individuals, they carry this with them through life. They bring the best out of other people and blossom themselves, because they are ready to seize every opportunity. Our pupils' willingness to try anything is one of their biggest strengths.

## Families at Grimsdell

Children develop best when their teachers and family work together to help them learn and be happy. We will always keep you well informed about your child's progress, and welcome you into school whenever you want to talk to their teacher. Your involvement in school events, projects, workshops and trips makes them very special for everyone.







# CAN YOU REMEMBER HOW EXCITING LIFE FELT WHEN YOU WERE AS YOUNG AS YOUR CHILD IS NOW?

Our approach to learning is to harness that energy and enthusiasm so that your child will love coming to school every day.

**Creative Curriculum**

Combining academic rigour with 21st-century skills. Our creative curriculum provides depth in the coverage of skills in all subject areas, and allows children to recognise the links in their learning. Children are interested, excited and curious to learn and discover.

Our aim is to instil in your child a deep and natural love of learning that will stay with them forever. Our curriculum is rich and diverse and extends well beyond the national curriculum. It is both demanding and exciting, giving your child the chance to excel in so many areas.

**The Growth Mindset**

We encourage every pupil to embrace challenge and to understand that success comes from hard work and persistence. At Grimsdell, we welcome failure because only by willing to risk failure do we try things we find difficult. We teach this positive mindset actively, so your child will understand how they best learn from a young age.

‘Pupils have high levels of creativity and curiosity, strongly enhanced through imaginatively planned activities across the curriculum.’

ISI Inspection 2020





'I love the teachers and I am really interested in everything we learn.'

Yr 2 Pupil

At Grimsdell we teach our themes across the whole school, each year group tackling it in a different way and developing their skills in core subject areas, such as reading, writing and arithmetic.

We encourage children to question, enquire and problem solve. They work in groups or pairs to discuss, debate and think critically and creatively. They build strong verbal skills so they are keen and able to write about their ideas and thoughts. Practical tasks test their thinking and challenge them to be creative, all the while building their independence and confidence.

#### Taking Soft Skills Seriously

The Mill Hill School Foundation has a shared approach and a curriculum that runs through from ages 3 to 18. A central element of this is our active teaching of interpersonal skills, emotional intelligence, teamwork and leadership, and your child's ability to think on their feet and cope under pressure. At Grimsdell, we nurture these skills from early childhood, giving your child the ultimate head start in our ever-changing world.





### Mathematics

At Grimsdell, we are committed to ensuring that all pupils make steady progress and are taught a broad and balanced mathematics curriculum developing a solid foundation. Our curriculum aims ensure continuity, progression and high expectations for all pupils across a broad range of key concepts; mathematical fluency, arithmetic competency, investigation, problem solving and the development of mathematical thinking. We endeavor to instill a positive and enthusiastic attitude towards mathematics, fostering confidence and achievement in an essential skill, ensuring that children develop a lifelong love of learning.

### Computing

Grimsdell children learn to be creative and active in their approach to Computing. We teach it as a discrete subject from the age of three, using programmable toys, multi-media software and resources. We have 1-to-1 iPads in Year 1 and 2 to enhance their learning and link to the creative curriculum wherever we can. In EYFS and KS1 we also use online journals to document their learning and share children's work with parents.

### English

At Grimsdell, we recognise that the key areas of speaking, listening, reading and writing are fundamental to children's learning.

We promote high standards of literacy by equipping children with the skills of spoken and written language, whilst developing their love of reading.

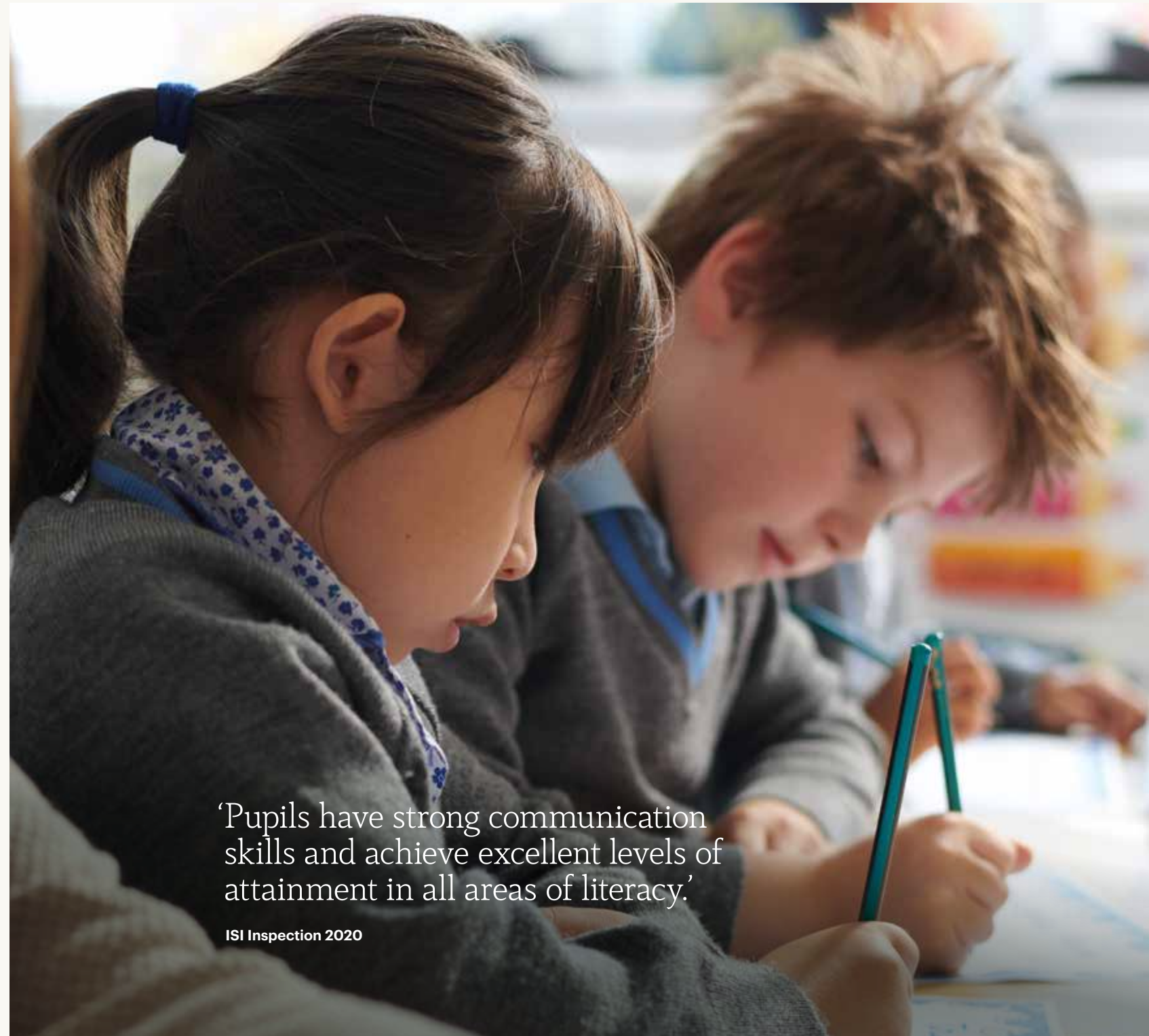
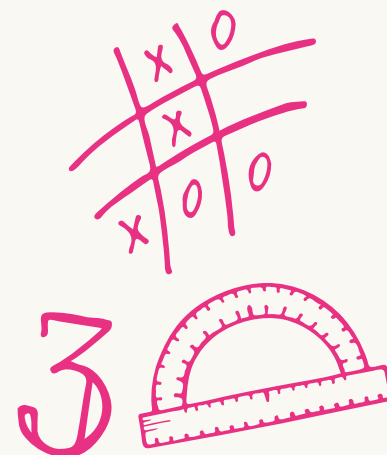
Our creative curriculum increases pupil's interest, involvement and achievement in English by providing children with exciting 'hands on' experiences to help stimulate their imagination, express their opinions and write for a variety of different purposes. Children are immersed in literature from a range of genres, both fiction and non-fiction.

### Preparing for Belmont

Our curriculum prepares children for the rich, broad and challenging work they will do when they move up to Belmont.

'I really like Maths because it's a fun thing to do and it gets your brain working.'


Yr 2 Pupil



'Pupils have strong communication skills and achieve excellent levels of attainment in all areas of literacy.'

ISI Inspection 2020



A photograph of a teacher and four children sitting inside a circular shelter made of sticks and leaves in a forest. The teacher, a woman with dark hair, is on the right, wearing a dark blue jacket and holding a book. The children, three boys and one girl, are sitting on the ground, looking towards the teacher. The shelter is made of thin sticks and is surrounded by dense green foliage. The text 'WE'RE OUT IN OUR WOODS' is written in green at the top left, and 'THROUGHOUT THE YEAR BECAUSE FOREST SCHOOL IS A CORE ELEMENT OF OUR CURRICULUM.' is written in white below it.

## WE'RE OUT IN OUR WOODS

THROUGHOUT THE YEAR BECAUSE FOREST SCHOOL IS A CORE ELEMENT OF OUR CURRICULUM.

‘Pupils develop a deep affinity with nature through the Outdoor Education Programme and use of the extensive school grounds.’

ISI Inspection 2020

**Forest School**  
The children play hide and seek, build shelters, light fires, cook, make environmental art and take part in role-play. They learn to safely use tools such as potato peelers, loppers, and bow saws, and about the forest itself including naming the trees and plants and identifying animal habitats. Forest School is definitely one of our favourite lessons.

**More than a Walk in the Woods**  
Forest School is transformative: not only do the children love it, but they grow visibly more confident as they play and carry out tasks in the outdoors. With each activity they learn to work in teams, to trust each other and to understand risk and responsibility.

They develop fine and gross motor skills, learning to use their bodies carefully and skilfully, and to look after themselves and the people around them. As they gain experience and understand the boundaries of behaviour they begin to lead their own activities, and we see them become remarkably resilient and independent.

**Nursery in Nature**  
Our full day Nursery setting offers our pupils the best of both an indoor and outdoor learning environment. Children spend half the day in our Nursery classroom and half the day in our newly refurbished Nursery Forest School.

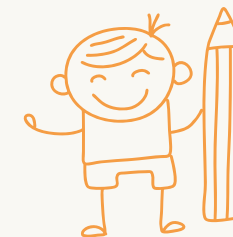
The children have the opportunity to complement all of their learning in the Nursery session by spending an extended session in the forest, developing skills such as; self-awareness, motivation, empathy, social and communication skills, independence, self-esteem and confidence. In addition children benefit from the development of physical skills, both gross and fine motor.





‘Pupils have extremely positive attitudes to learning due to the enthusiasm demonstrated by the highly professional staff.’

ISI Inspection 2020



## POWERFUL LEARNING

WE GIVE YOUR CHILD INDIVIDUAL ATTENTION. WE UNDERSTAND THEIR STRENGTHS, WEAKNESSES AND ENTHUSIASMS.

### Powerful Learning

Our classes are small and a classroom assistant works alongside every teacher, giving your child plenty of support throughout the day.

Because we all learn differently we adapt our approach for each pupil so your child will always be learning in the best way for them.

We give our pupils meaningful feedback so your child will learn to reflect, feel positive about improving and know what they need to do next.

Our approach means that our pupils are effective, self-motivated learners who share our high expectations and belief in themselves.

### Specialist, Dedicated Teachers

The teachers at Grimsdell form a close team of motivated, skilled professionals, who work together to make sure that in every lesson, every day, your child’s learning is of the highest quality.

We have specialist teachers in PE, Sports, Music, Computing and Forest School, who work with the form tutors to plan, consider how best to support each pupil, and create exciting, inspiring and productive lessons across the curriculum.



‘Pupils develop a wide range of personal values and skills through the school’s consistent use of strong pastoral guidelines.’

ISI Inspection 2020

# A home from home

## GRIMSDELL IS WONDERFULLY WELCOMING

OUR SCHOOL IS A FRIENDLY PLACE WHERE EVERYONE FEELS PART OF OUR FAMILY. WE WILL MAKE SURE YOUR CHILD FEELS SAFE AND NURTURED HERE.



### The School Day

Nursery in Nature runs from 8.20am to 3:15pm. The children are split into two sessions; spending half the day in the classroom and half in the Forest. Each half term the groups will swap timings so all pupils can experience Forest School in both the morning and afternoon.

Reception arrive between 8.15am to 8.30am and depart at 3.00pm, with Year 1 and Year 2 arriving between 8.15am to 8.30am and departing at 3.05pm. We have an entire road to park on.

The Head and members of the Senior Team greet the children at their respective doors, shaking their hand, making eye contact, smiling and wishing them good morning by name. Breakfast Club starts the day in a calm and quiet manner with the children

starting at 7:30am and enjoying a healthy breakfast. Our popular after school care facility, Stay and Play, runs until 5.30pm with creative and stimulating activities for children of all ages.

### Our Values

Grimsdell is a Christian foundation, based upon the principles of religious freedom. Our pupils represent a wide range of faiths and cultures, and our assemblies and celebrations place a strong emphasis on moral and mutual respect.

With our support your child will be ready to learn, develop their personality and become secure and confident in everything they do. Your child’s class teacher and teaching assistant will get to know them well, we communicate often with you, and together with the specialist staff,

Senior Team and Head, your child will be surrounded by people who will always take care of their wellbeing.

### School Houses

Each child at Grimsdell is in one of our three Houses, Oak, Willow and Beech, making friends across the age groups and joining in academic and cross-curriculum events and competitions. House activities allow our young pupils to experience team spirit, a sense of belonging and healthy competition; preparing them for the more sophisticated and far reaching House experience that they will encounter at Belmont, and then at Mill Hill.





#### CLUBS AND ACTIVITIES

Ballet Ball Skills Board  
Games Chess Coding  
Construction Creative Film  
Drama Eco Club Fitness  
Swimming Football Jewellery  
Making Karate Lamda  
Exams Mini Tennis Modern  
Dance Mosaic Nature  
Photography Rounders  
Toffee Bear Choir Science  
Club Street Dance Class Tap  
Dancing Class Choir

#### **Cook, Dance and Sing: What Do You Love to Do?**

We offer a fantastic range of activities; our pupils are lively and curious so we love to feed their enthusiasm. We design our activities to spark your child's creativity. We inspire them to try something new and learn about leadership and teamwork. The talents and interests we cultivate now will nourish them in the future.



#### **Immersive Approach**

Every term we devote a week of learning to a specific area, ensuring that all learning links in with this aspect of the curriculum, and promotes the subject with an inspiring and immersive approach. The subject matter is relevant and fresh with examples being Wellbeing Week, Road Safety Week and Online Safety Week, along with some old favourites such as National Book Week, National Science Week and Environment Week.

#### **School Trips**

Trips enhance the curriculum by bringing learning to life in a wider context. These experiences allow children to bond, and develop independence and a sense of community within the year group, with their peers and teachers.



The standard of pupils' singing is excellent and they sing with great enthusiasm due to the singing culture of the school, and the many opportunities they have to perform.'

ISI Inspection 2020

# Music and Performing Arts

## Music is at the heart of our school

Music lessons are taught by a specialist teacher in an engaging, interactive and fun way using the Kodaly and Dalcroze methods. The 'elements' of music such as Pitch, Duration, Dynamics, Tempo, Timbre, Texture and Structure are taught through games, singing and movement and using the percussion instruments. The children can learn additional instruments in our afterschool clubs and be part of the Toffee Bear Choir. The choir are given wonderful performance opportunities both inside and outside the school setting. They have enjoyed singing at the 'Royal Festival Hall' and the 'St Marylebone Parish Church' as of part the 'Sick Children's Trust' annual Christmas concert.

Grimsdell's productions are of a very high standard. Every child in the school from Nursery to Year 2 is part of our spectacular Christmas Production performed at Mill Hill School. Each year group is then also showcased in their own production which is performed in the purpose-built theatre at Mill Hill School with professional lighting and sound. Each child has a speaking part and is given their time to shine. The children really thrive during show preparations, they grow in confidence and truly relish the experience.



'The school is great because we do lots of fun things.'

Yr 1 Pupil





# A spring in our step



## PHYSICAL EDUCATION

IN PE YOUR CHILD WILL  
LEARN VITAL SKILLS FOR  
THEIR DEVELOPMENT.

‘Pupils’ collaborative  
skills are extremely  
well-developed.’

ISI Inspection 2020



At Grimsdell we aim for our pupils to not only develop their fundamental skills in P.E, but find a physical activity that inspires and stimulates a lifelong interest.

Our specialist PE teacher will teach your child balance, co-ordination, gross motor skills, ball skills and team work in a variety of sports, including gymnastics, games, large apparatus, tennis, swimming, athletics and dance.

Pupils from Mill Hill School run an annual sports festival for us, and our summer Sports Day is a highlight of the year. Everyone takes part, there is healthy competition and teachers’ and parents’ races.

### Swimming:

Swimming is a life skill that can lead to the enjoyment of many water sports. We are very fortunate to have our own swimming pool on site. Our pupils start their swimming lessons when they are in Year 1.

### Team Sports

In Year 2 the children start to play team sports at Belmont, using its coaches and facilities. The children play netball, hockey, rounders and cricket for the girls, and touch rugby, football and cricket for the boys. This is a wonderful way to build their playing skills so they are ready for Year 3 sports at Belmont.



‘Pupils build strong relationships with adults and peers through the many opportunities available to them to work across classes and year groups.’

ISI Inspection 2020



# Moving on to Belmont



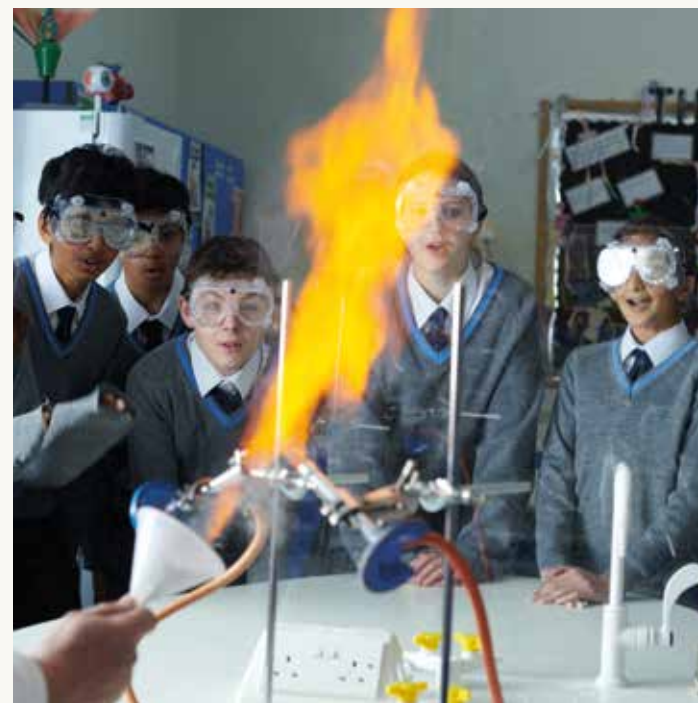
The ties between Grimsdell and Belmont are extremely close. We co-ordinate our curricula and learning approaches and from Year 1 your child will take part in Forest School, camps and workshops at Belmont. Year 2's weekly sports and other activities mean that Belmont soon feels almost as familiar as Grimsdell.

Once at Belmont they will be among friends; almost all Grimsdell children go on to Belmont, in addition, the Year 2's will make new friends among the additional in-take. Belmont's Year 3

teachers and Head of Lower School will already know your child and we know they will be settled and happy in their new school.

## **No Exam, No Stress**

The transition to Belmont from Grimsdell is simple and stress-free at Year 3, with no need to take Belmont's external 7+ examination. Pupils automatically move onto Belmont, subject to meeting the expectations on behaviour and making good academic progress.





# Mill Hill School

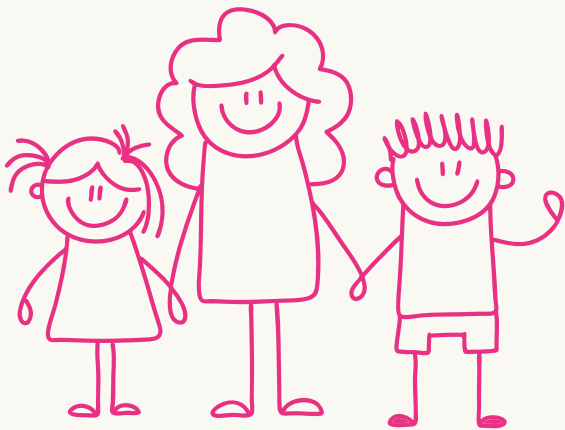
OUR CHILDREN OFTEN WALK THROUGH THE GROUNDS OF MILL HILL SCHOOL AND LOOK FORWARD TO STUDYING THERE ONE DAY.

Our strong partnership with Mill Hill School means that Grimsdell pupils regularly work with their older counterparts. The exceptionally confident, kind, capable, well-rounded individuals who leave Mill Hill are a constant inspiration to our pupils.

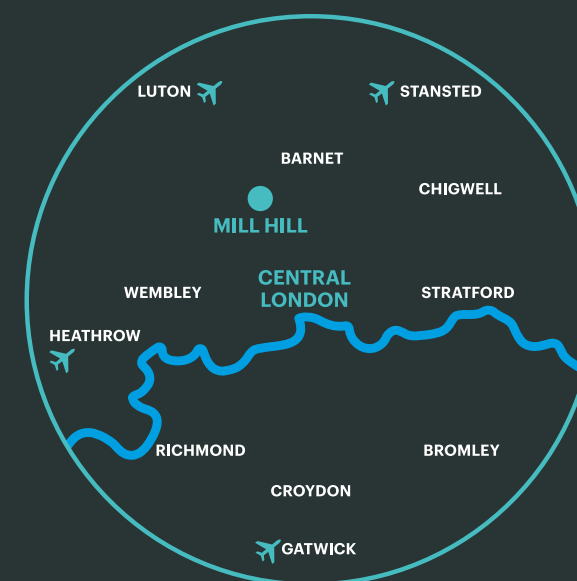
Belmont pupils transfer directly to Mill Hill School in Year 9. Whilst there is no need to sit an examination, pupils are expected to meet our expectations on behaviour and make good academic progress. Achieving this will give you the reassurance that once your child has joined our foundation of schools, we will give them an exceptional education in our school community until they are 18.

## Beyond Mill Hill School

Mill Hill pupils go on to study and work in a limitless range of fields, from medicine, engineering, literature and the arts to digital media, acting and everything in between. Our pupils grow into fine young adults, and strong individuals who are equipped to take their own path within school and beyond.







## NEXT STEPS

WE LOOK FORWARD TO  
WELCOMING YOU AT GRIMSDELL  
AND SHOWING YOU WHAT WE  
HAVE TO OFFER.

### Arranging a visit

It's the best way to find out if we are right for your child, and to answer all the questions you may have.

Children usually join Grimsdell in Nursery (age 3+) and Reception (age 4+).

For more information, or to apply, please contact our Admissions Team:  
020 8959 6884  
[admissions@grimsdell.org.uk](mailto:admissions@grimsdell.org.uk)

### Getting to Grimsdell Mill Hill Pre-Preparatory School

Despite its rural setting, Mill Hill is within easy reach of central London, being served by bus, underground and overground train services. Close to the M1, M25 and A1(M), it is within easy driving distance of all London airports.

### Public transport

- 🚌 240 route
- ✈ Heathrow 40 minutes; Luton 30 minutes; Stansted 1 hour; Gatwick 1 hour 15 minutes
- 🚆 Mill Hill Broadway (direct trains to central London and St Pancras International)
- 🚶 Mill Hill East
- 🚗 M1/M25/A1



**Grimsdell, Mill Hill Pre-Prep.** A part of the Mill Hill Education Group.



**Mill Hill**  
EDUCATION GROUP

Instilling values, inspiring minds  
[millhill.org.uk/grimsdell](https://millhill.org.uk/grimsdell)

**Grimsdell**

Mill Hill Pre-Preparatory School  
Winterstoke House  
Wills Grove  
Mill Hill Village  
London NW7 1QR

020 8959 6884

[millhill.org.uk/grimsdell](https://millhill.org.uk/grimsdell)

Follow us @MillHillPrePrep

